



**Computer Weld  
Technology, Inc.**

# **HSA-2000™**

## **HORIZONTAL SLIDE ASSEMBLY**

### **HSA-2000™ SERIES SLIDES**

Computer Weld Technology's HSA-2000™ is a precision linear motion control device that provides exacting horizontal movement for cross-seam positioning and / or torch oscillation. The slide assembly is intended to be used with Computer Weld Technology's MSC-1000™ Micro-step Controller which provides the necessary control functions and drive power to the stepper motor drive. The high strength timing belt direct drive design provides smooth operation and superior response. The ability to change direction rapidly, its compact lightweight design and excellent repeatability, makes the HSA-2000™ an ideal tool for use with automatic systems and automated welding applications.



The user can regulate the slide center position, stroke width, oscillation speed, left and right dwell times and enable automatic centering for the purpose of centerline weld joint tracking for all welding processes.

\*See Note\*

NOTE: Functions available only when used with MSC-1000™ control.

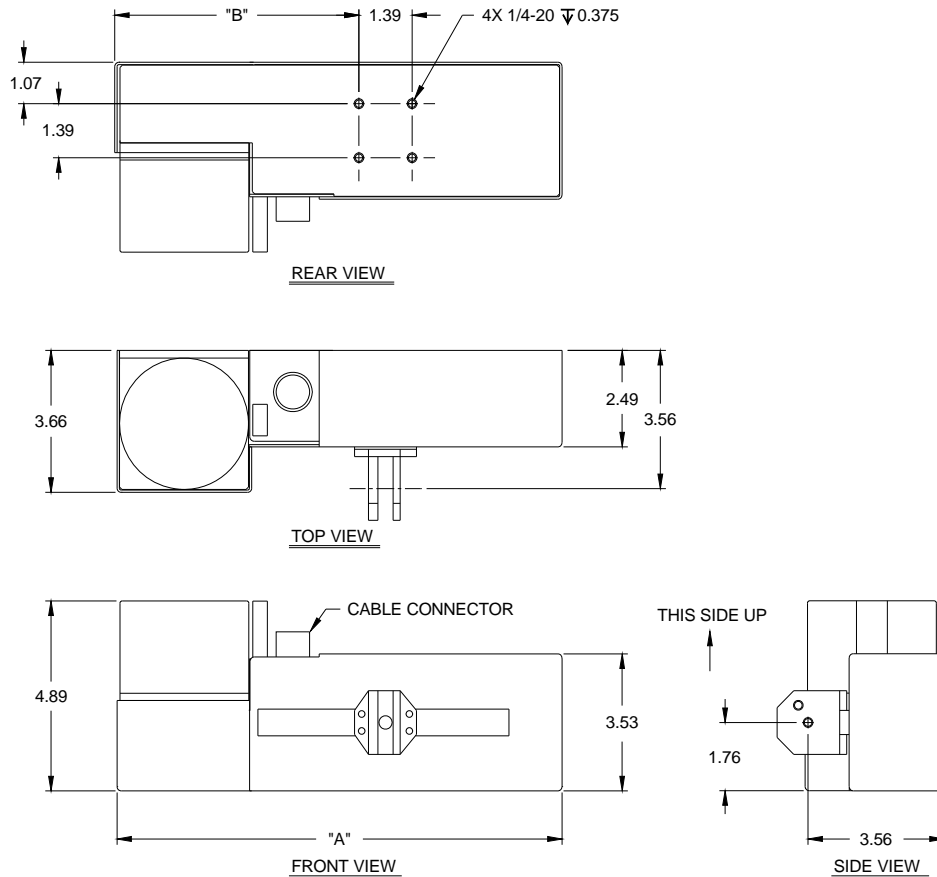
### **FEATURES**

- Accurate positioning
- Compact / lightweight design
- Stepper motor drive
- Timing belt driven
- Precision Ball Rail System
- Automatic power down brake

### **BENEFITS**

- Provides repeatability for critical applications
- Usable in confined areas for multiple applications
- Provides rapid direction change and smooth, quiet operation
- Provides long life and low maintenance cost
- Assures slide does not move when power is removed

# HSA-2000™ SPECIFICATIONS



	SLIDE LENGTH	"A" DIM.	"B" DIM.	SLIDE WEIGHT
<b>HSA-2003</b>	3.00" (7.62cm)	11.67" (29.64cm)	6.40" (16.26cm)	10.00 lbs (4.54kg)
<b>HSA-2008</b>	8.00" (20.32cm)	16.39" (41.63cm)	8.77" (22.28cm)	12.00 lbs (5.44kg)
<b>HSA-2012</b>	12.00" (30.48cm)	21.11" (53.62cm)	21.11" (30.81cm)	16.00 lbs (7.26kg)

## MECHANICAL SPECIFICATIONS

<b>Load Capacity:</b>	35 lbs (15.88kg), 6.00" (15.24cm) from slide face
<b>Slide Weight:</b>	*See Table Above
<b>Stroke Length:</b>	3.00" (7.62cm), 8.00" (20.32cm), 12.00" (30.48cm)
<b>Oscillation Width:</b>	0.01" (0.03cm) to maximum slide length
<b>Travel Velocity:</b> (See Note)	0.05" (0.13cm) to 6.00" (15.24cm) / second
<b>Left/Right Dwell Control:</b> (See Note)	0.01 to 9.99 seconds
<b>Position Resolution:</b> (See Note)	± 0.001" (± 0.003cm)
<b>Position Accuracy:</b> (See Note)	± 0.004" (± 0.01cm)
<b>Operating Temperature Range:</b>	-30°F (-34°C) to 150°F (65°C)
<b>Brake System:</b>	Automatic power down brake

Note: Specifications subject to change without notice.