

WIRETRAK

Wire Feed Sensor

The WIRETRAK - the new product from Computer Weld Technology for making your welding environment more efficient. By providing the necessary data acquisition; signal processing and communications firmware, the WIRETRAK allows remote logging of your wire utilization and actual productivity rates. It is designed for monitoring purpose and is based on an embedded micro-controller. The Optional Arc Track II Software offers the ability to program, download data and communicate with multiple WIRETRAK units.

The sensor is simple to install at the GMAW wire drive motor inlet using industry standard quick disconnect conduit fittings. The sensor may also be remotely mounted using an industry standard conduit assembly and the optional mounting bracket. A series of display screens are provided to allow the operator or supervisor access to wire feed speed run data and to program the sensor for operation. The WIRETRAK incorporates a Run/Program selector switch for completion of set-up by operator or supervisor. Once set-up is complete, the key can be removed to ensure no changes are made.



The WIRETRAK allows remote logging of the following parameters:

- Actual Wire Feed Speed
- Arc Time based on wire feed motion
- Summary of Wire Feed Speed and Arc Time Wire Feed for last weld
- Totalized Wire Feed Speed and Arc Time
- Volume deposited for last weld
- Totalized volume deposited based on average wire speed and time

FEATURES

- Industry standard quick disconnect fittings for wire speed transducer and mounting
- Two BCD switches provided to allow external definition of 1 to 247 MODBUS™ addresses
- Optional WireLog PLUS™ Software Program to program and download data from multiple WireTrak™ Sensors
- RS-485 Duplex Network Interface Serial Port
- Optional mounting bracket

BENEFITS

- Mount directly to any wire drive motor inlet
- Allows remote mounting of sensor using standard quick disconnect conduit assemblies for wire speed sensor
- Provides easy installation
- Communication with multiple WireTrak™ Sensors with optional software package
- Up to 400 weld summaries may be stored before downloading

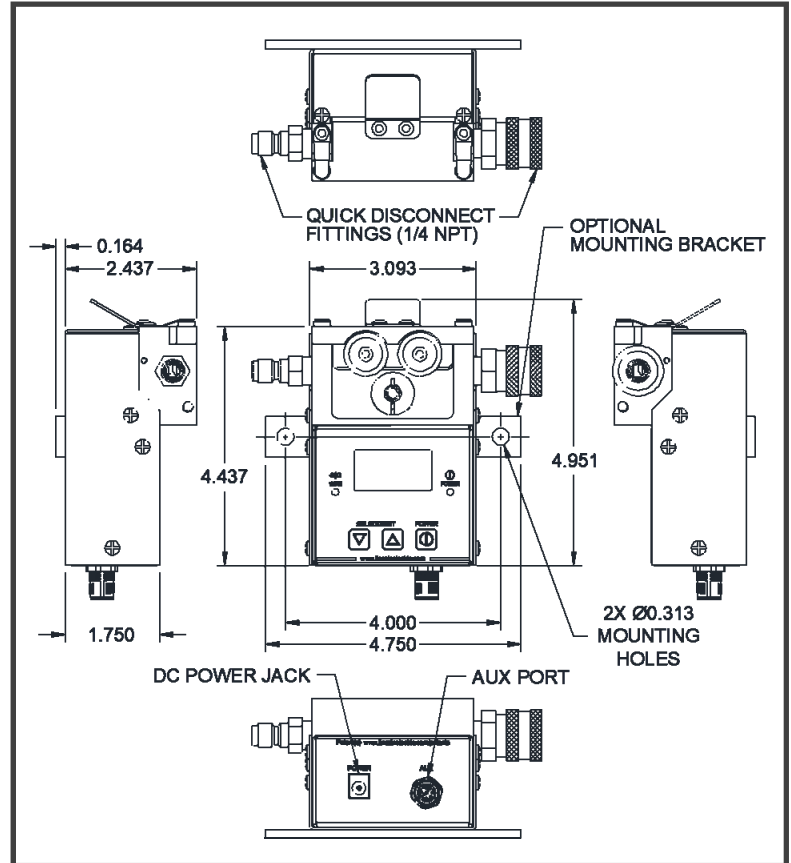
WIRETRAK SPECIFICATIONS

WIRETRAK Product Part Numbers

Part Numbers	Description
A0A0233	Stand-alone WIRETRAK System Includes: Sensor and External Power Supply
A0A0234	Networked WIRETRAK System Includes: Sensor and Sensor Cable
A2A0026	Mounting Bar Kit

WIRETRAK Sensor Specifications

Wire Diameter (min/max)	0.03" - 0.062" (0.8 mm / 1.6 mm)
Speed Range	10 - 1000 ipm (4 - 420 mm/s)
Relative Precision on Range	+/- 3%
Communications Protocol	MODBUS™ RTU
Dimensions	4.95" L x 3.09" W x 2.44" H (126 mm L x 79 mm W x 62 mm H)
Weight	1.4 lbs (0.6 kgm)
Sensor Power	24 vdc @ 0.2 amp, ripple 200 mv



“Where has all the wire gone? Find out with the WIRETRAK.”

“Impact your wire cost with the WIRETRAK”

Arc Track II™ Data Logging Program

The Arc Track II Program is used with the WIRETRAK and provides a simple MODBUS terminal to program and download data from multiple WIRETRAK devices. The program uses the MODBUS™ RTU protocol to establish communication with multiple WIRETRAK devices. The interface to the Sensor is via a RS-485 duplex network.

Arc Track II™ Product Part Number

Part Numbers	Description
A5Z0051	Arc Track II™ Software

NetHub™ Data Logging Program

NetHub™ is an isolated RS-485 communications driver and power supply to connect up to six WIRETRAK to the MODBUS™ RTU network. A total of 247 sensors may be connected to the network using multiple NetHub™ units. NetHub systems are configured for either USB or Ethernet communications.

