



**Computer Weld  
Technology, Inc.**

# WireTrak™ Wire Feed Sensor

The WireTrak™ - the new product from Computer Weld Technology, Inc. for making your welding environment more efficient. By providing the necessary data acquisition; signal processing and communications firmware, the WireTrak™ allows remote logging of your wire utilization and actual productivity rates. The WireTrak™ is designed for monitoring and telemonitoring service purposes and is based on an embedded micro-controller. The Optional WireLog Plus™ software offers the ability to program, download data and communicate with multiple WireTrak™ units.



WireTrak™ - Standard Configuration



WireTrak™ with Optional Mounting Bar Kit

The sensor is simple to install at the GMAW wire drive motor inlet using industry standard quick disconnect conduit fittings. The sensor may also be remotely mounted using an industry standard conduit assembly and the optional mounting bracket. A series of display screens are provided to allow the operator or supervisor access to wire feed speed run data and to program the sensor for operation. The WireTrak™ incorporates a Run/Program selector switch for completion of set-up by operator or supervisor. Once set-up is complete, the key can be removed to ensure no changes are made.

The WireTrak™ sensor allows remote logging of the following parameters:

- Actual Wire Feed Speed
- Arc Time based on wire feed motion
- Summary of Wire Feed Speed and Arc Time Wire Feed for last weld
- Totalized Wire Feed Speed and Arc Time
- Volume deposited for last weld
- Totalized volume deposited based on average wire speed and time

## FEATURES

- Industry standard quick disconnect fittings for wire speed transducer and mounting
- Two BCD switches provided to allow external definition of 1 to 247 MODBUS™ addresses
- Optional WireLog PLUS™ Software Program to program and download data from multiple WireTrak™ Sensors
- RS-485 Duplex Network Interface Serial Port
- Optional mounting bracket

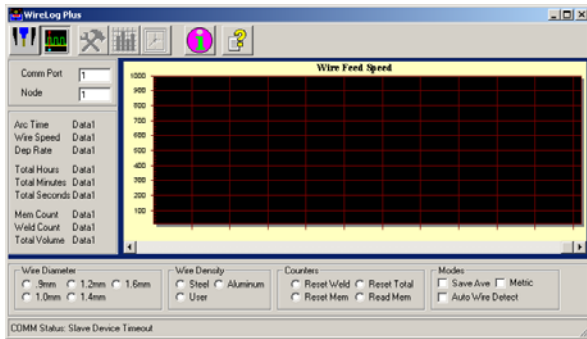
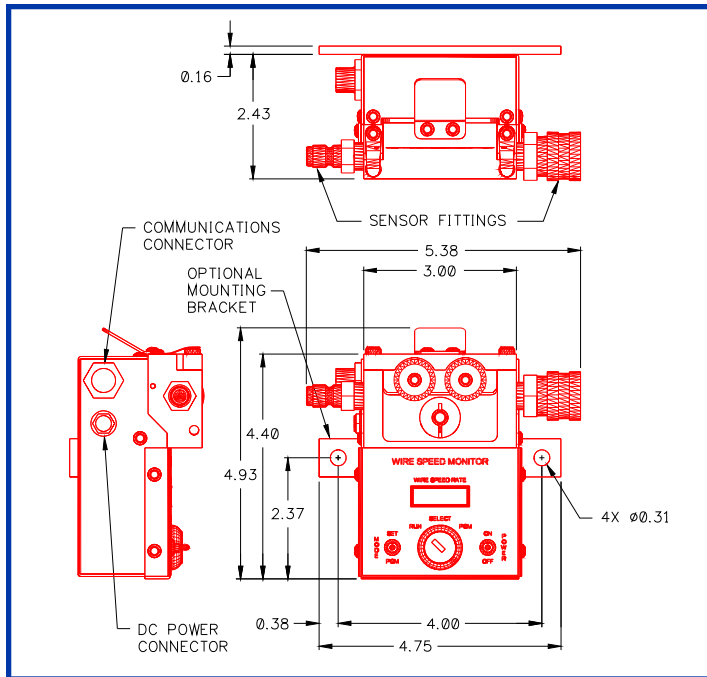
## BENEFITS

- Mount directly to any wire drive motor inlet
- Allows remote mounting of sensor using standard quick disconnect conduit assemblies for wire speed sensor
- Provides easy installation
- Communication with multiple WireTrak™ Sensors with optional software package
- Up to 400 weld summaries may be stored before downloading

# WireTrak™ SPECIFICATIONS

## WireTrak™ Product Part Numbers

Part Numbers	Description
A0A0102	Networked WireTrak™ System Includes: Sensor and Sensor Cable
A0A0103	110 VAC Stand-alone WireTrak™ System Includes: Sensor and External Power Supply
A0A0104	220 VAC Stand-alone WireTrak™ System Includes: Sensor and External Power Supply
A2A0026	Mounting Bar Kit



WireLog Plus™ Wire Speed Sensor Data Logging Program

The WireLog Plus™ Program is used with the WireTrak™ Sensor and provides a simple MODBUS terminal to program and download data from multiple WireTrak™ Sensors. The program uses the MODBUS™ RTU protocol to establish communication with multiple WireTrak™ devices. The interface to the Sensor is via a RS-485 duplex network.

## WireLog Plus™ Product Part Numbers

Part Numbers	Description
A5Z0036	WireLog Plus™ Software

## WireTrak™ Sensor Specifications

Wire Diameter (min/max)	0.03" - 0.062" (0.8 mm / 1.6 mm)
Speed Range	10 - 1000 ipm (4—420 mm/s)
Relative Precision on Range	+/- 3%
Communications Protocol	MODBUS™ RTU
Dimensions	4.93" L x 5.38" W x 2.43" H (126 mm L x 137 mm W x 61 mm H)
Weight	1.4 lbs (0.6 kgm)
Sensor Power	24 vdc @ 0.2 amp, ripple 200 mv

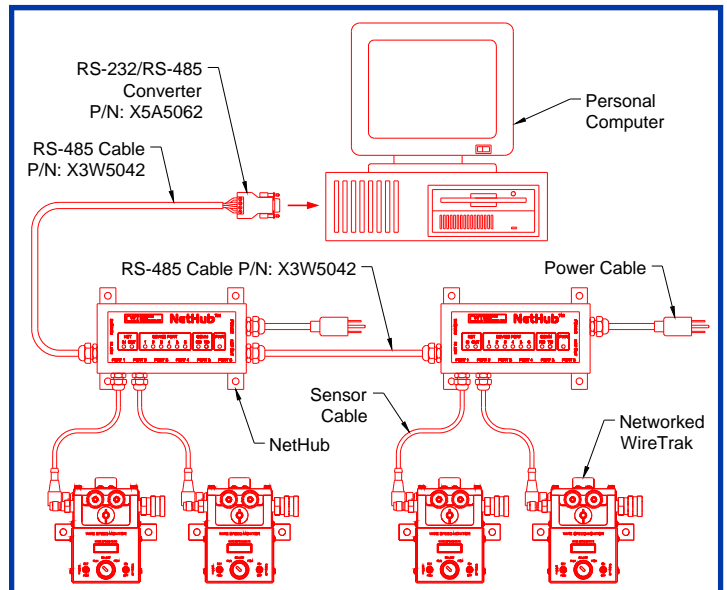
"Where has all the wire gone? Find out with the WireTrak™"

"Impact your wire cost with the WireTrak™"



## NetHub™

NetHub™ is an isolated RS-485 communications driver and power supply to connect up to six WireTrak™ Sensors to the MODBUS™ RTU network. A total of 247 sensors may be connected to the network using multiple NetHub™ units.



## NetHub™ Product Part Numbers

Part Numbers	Description
A3A0214	110 VAC NetHub™
A3A0219	220 VAC European NetHub™
X3W5042	RS-485 Cable (Cable needed between NetHub™ units or between NetHub™ unit and RS-232/RS-485 Converter at your personal computer)
X5A5062	RS-232/RS-485 Converter (connection between communications cable and personal computer)